

**Tunkhannock Area School District  
Board Minutes – Special Purpose Meeting  
December 1, 2016**

---

The Tunkhannock Area School District Board of Directors met on the above date at the High Cafeteria. The following members were present:

<b>Board Member:</b>	<b>Present</b>	<b>Absent</b>
Philip Farr, President	✓	
Bill Weidner, Vice-President	✓	
John Burke, Treasurer	✓	
Holly Arnold	✓	
Lori Bennett	✓	
Randy Greenip	✓	
Rob Parry	✓	
Bill Prebola	✓	
Bill Swilley	✓	

There were interested citizens present.

Mr. Farr called the meeting to order at 7:35PM and then led the Pledge of Allegiance.

Mr. Farr announced that an Executive Session was held just prior to this meeting to discuss some personnel matters.

<b><i>Public Comment on Agenda Items Only</i></b>
---

None

<b><i>Board/Superintendent's Comments</i></b>
---

Mr. Farr turned the floor over to Ms. McPherson who provided a brief introduction and emphasized that the most important thing in this consolidation study is to focus on education, what is best for the kids and what a 21<sup>st</sup> century school district looks like.

Ms. McPherson stated that her expectations are 1) that people participate 2) that people think outside the box and 3) people are nice – no exceptions.

Ms. McPherson stated that although the focus must always be on education, a big piece of this is what we can save and drive back into education. Ms. McPherson went on to walk the Board and the public through an example of what savings could be generated by consolidating four elementary schools into two (see Exhibit A attached).

The Board discussed the various options of closing one, two or all three outlying buildings and the impacts each would have on the students and the community aside from the costs.

The consensus of the Board was to have the Administrative Team evaluate the closing of Mill City Elementary & Evans Falls Elementary in year one and Mehoopany Elementary in year two or later with a potential \$6 million renovation/expansion at Roslund Elementary and/or the High

**Tunkhannock Area School District  
Board Minutes – Special Purpose Meeting  
December 1, 2016**

---

School depending on grade re-alignment. Mr. Kelly from KCBA noted that the District would be saving money on closing the first two buildings while looking to make a capital investment before closing the third building. Mr. Burke noted that the District's debt service payments drop off to almost nothing after 2022-23.

Mr. Parry stated that a community impact study should be done at some point to determine the effect of closing since the buildings are being heavily used for local community activities.

The Board agreed that the option that should be advertised for public hearing is closing Mill City Elementary & Evans Falls Elementary next year and Mehoopany Elementary either next year or at some other point in the future.

**Public Comment**

Public comments were made on the bond subsidy losses, bus ride times, class sizes, test scores, operational savings estimates, enrollments, charter schools, renovation costs and the social impacts on the children and families in the community.

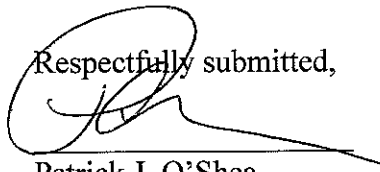
Ms. McPherson announced that there will be a Public Hearing scheduled for December 22<sup>nd</sup> on this topic followed by a 90-day period prior to vote. She also stated that the regularly scheduled Board meetings will be held on December 8<sup>th</sup> for Reorganization and the Work Session/Board Meeting on December 15<sup>th</sup>.

A motion to adjourn was made at 9:28 pm by Mrs. Arnold and seconded by Mr. Burke. Motion carried on all ayes.

**ROLL CALL VOTE**

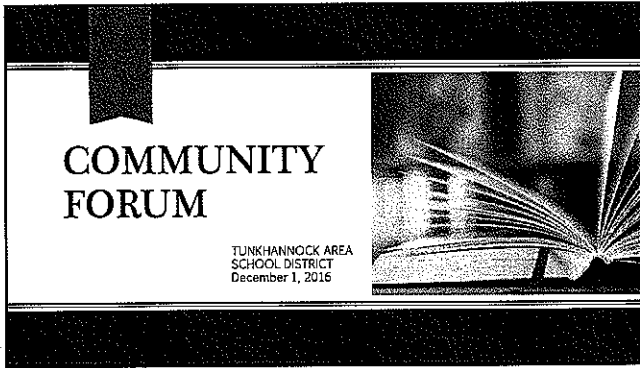
There were no resolutions made at this meeting.

Respectfully submitted,



Patrick J. O'Shea  
Board Secretary

Attachments: A



- Our Focus:**
- Educational Excellence
  - Support 21<sup>st</sup> Century
  - Educational Needs
  - Establish a Standard of Educational Equity and Educational Access across the District

- Our Expectations:**
- Participate
  - Think Outside the Box
  - Be nice. No Exceptions.

- Our Analysis Model: An EXAMPLE**
- The following pages represent a SAMPLE analysis
  - We can use this model in analyzing future scenarios
  - Staff Attrition, Subsidy Loss, Building Operating Costs, and Transportation

Sample Analysis: Close Mill City 2017-18  
 Close Evans Falls 2018-19

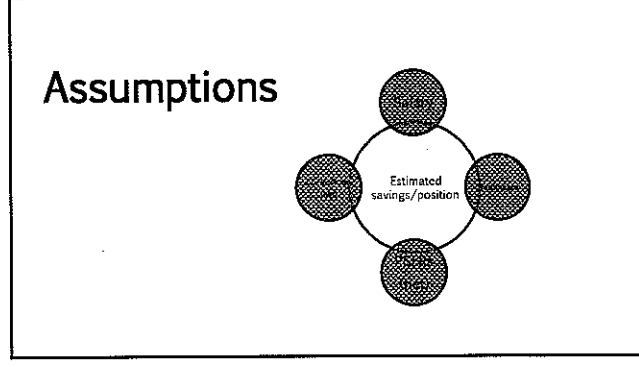
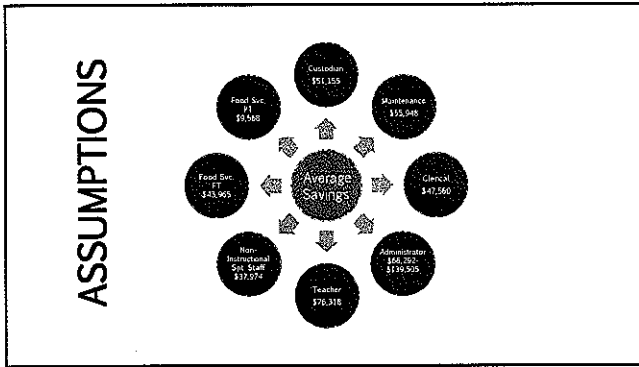


EXHIBIT A (p of 3)



## Anticipated Retirements/Attrition

	SY17-18	SY18-19	SY19-20	SY20-21	SY21-22
Custodians	3	3			
Maintenance	0	1			
Clerical	1	1			
Non-Inst. Spt.	1	1			
Food Svc-FT	1	1			
Food Svc-PT	1	1			
Teacher	2	6			
Administrator	0	0			

### Incremental Attrition Savings

	SY17-18	SY18-19	SY19-20	SY20-21	SY21-22
Custodians	\$153,465	\$153,465			
Maintenance	\$0	\$55,948			
Clerical	\$47,560	\$47,560			
Non-Inst. Spt.	\$37,974	\$37,974			
Food Svc-FT	\$43,965	\$43,965			
Food Svc-PT	\$9,586	\$9,586			
Teacher	\$152,636	\$457,908			
Administrator	0	0			

	SY17-18	SY18-19	SY19-20	SY20-21	SY21-22
Incremental Reduction	\$445,186	\$806,406	\$0	\$0	\$0
Total Expense Reduction	\$445,186	\$1,251,592	\$1,251,592	\$1,251,592	\$1,251,592
Cumulative Expense Savings	\$445,186	\$1,696,778	\$2,948,370	\$4,199,962	\$5,451,554

### Attrition Expense Reduction & Estimated Bond Subsidy Loss

#### Attrition Expense Reduction

	SY17-18	SY18-19	SY19-20	SY20-21	SY21-22
Incremental Reduction	\$445,186	\$806,406	\$0	\$0	\$0
Annual Expense Reduction	\$445,186	\$1,251,592	\$1,251,592	\$1,251,592	\$1,251,592
Cumulative Expense Savings	\$445,186	\$1,696,778	\$2,948,370	\$4,199,962	\$5,451,554

#### Estimated Bond Subsidy Loss

	SY17-18	SY18-19	SY19-20	SY20-21	SY21-22
Mill City	(\$2,741)	(\$2,621)	(\$368,933)	(\$876,538)	(\$257,985)
Evans Falls	(\$24,436)	(\$24,373)	(\$411,315)		
Annual Loss in Bond Subsidies	(\$27,177)	(\$26,994)	(\$780,248)	(\$876,538)	(\$257,985)
Cumulative Loss in Bond Subsidies	(\$27,177)	(\$54,171)	(\$834,419)	(\$1,710,957)	(\$1,968,942)

### Cumulative Project Net Savings/(Loss) for Attrition & Bond Subsidy Loss Only

	SY17-18	SY18-19	SY19-20	SY20-21	SY21-22
Cumulative Savings	\$445,186	\$1,696,778	\$2,948,370	\$4,199,962	\$5,451,554
Estimated Loss	(\$27,177)	(\$54,171)	(\$834,419)	(\$1,710,957)	(\$1,968,942)
Cumulative Project Net Savings/Attrition & Bond Subsidy	\$418,009	\$1,642,607	\$2,113,951	\$2,489,005	\$3,482,612

### Transportation-Mill City Only

Bus #	Current Configuration		Adjusted for Closure		AM Time	PM Time
	Current Mileage	Current Cost	Adjusted Mileage	Adjusted Cost		
2	104		54		:52	:50
29	75		69		:104	:1:00
30	85.6		75		:55	:52
31	75.5		66		:49	:52
33	57.9		70		:51	:49
37	79.8		63		:55	:50
38	89.6		74		1:00	1:00
39	73.7		53		:45	:45
41	77.6		28		:29	:29
<b>Totals</b>	<b>719.1</b>	<b>\$421,665</b>	<b>554</b>	<b>\$342,496</b>		

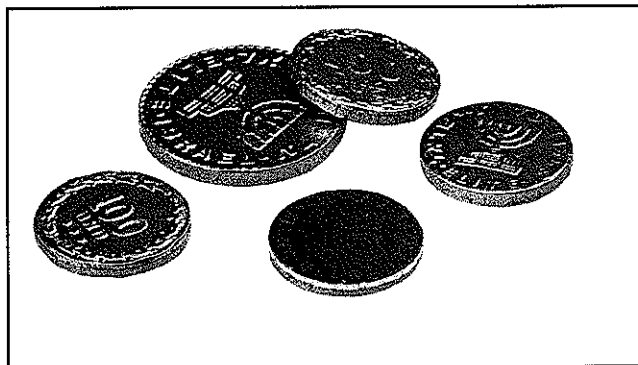
Potential Savings	\$79,167
Potential Transportation Subsidy Loss (60%)	\$47,500
Potential Net Transportation Savings	\$31,667

EXHIBIT A (p2 of 3)

Building Operating Costs

	Mill City	Evans Falls	Mehoopany	Roslund
Operating Costs	\$151,112	\$172,736	\$163,145	\$215,438
Potential Savings				
Liquidate	\$151,112	\$172,736	\$163,145	\$215,438
Maintain Unused	\$118,331	\$135,939	\$129,732	\$168,109

	SY2017-18	SY2018-19	SY2019-20	SY2020-21	SY2021-22
Construction Projects Not Started At Year End	\$416,882	\$1,842,997	\$3,213,650	\$2,439,500	\$3,482,633
Construction Projects Not Started At Year End Proposed	\$31,667	\$65,934	\$97,900	\$126,627	\$158,334
Construction Projects Not Started At Year End Proposed	\$10,112	\$474,660	\$708,830	\$1,102,650	\$1,846,500
<b>Total</b>	<b>\$600,788</b>	<b>\$2,180,901</b>	<b>\$3,007,759</b>	<b>\$3,738,326</b>	<b>\$5,087,450</b>



Respect for ourselves guides  
our morals, respect for others  
guides our manners.

*Laurence Sterne*